

BETWEEN THE BARS

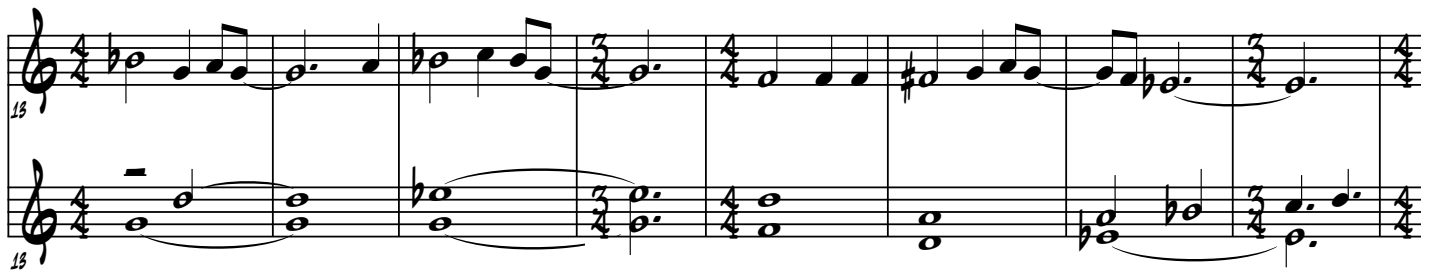
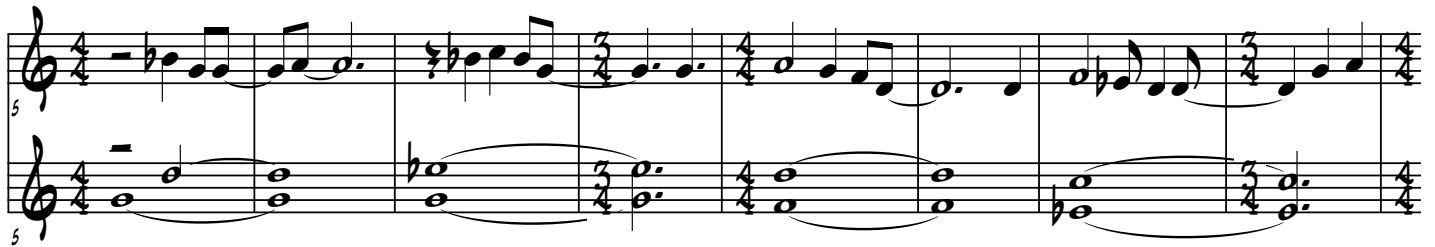
DRUMS TACET UP FRONT

ELLIOTT SMITH ARR. JOSH DEUTSCH

INTRO GUITAR - 8VS



VERSE 1



INTERLUDE - GUITAR + DRUMS ENTER



VERSE 2



2

41

49

57

65

SOLO FORM

FINE

Handwritten musical score for guitar in 4/4 time. The score consists of four staves. The first staff starts at measure 41 and ends at measure 48, featuring a boxed 'B' and various chords including E^b , $D-/F$, G^- , E^b-/G^b , B^b/F , and $E\emptyset7$. The second staff starts at measure 49 and ends at measure 56, featuring chords E^b , F , G^- , E^b , and E^b_- . It concludes with a boxed 'FINE'. The third staff, labeled 'SOLO FORM', starts at measure 57 and ends at measure 64, containing rhythmic slash notation and chords G^- , E^b/G , G^- , and E^b/G . The fourth staff starts at measure 65 and ends at measure 72, continuing the solo with chords E^b-/G^b , B^b/F , $E\emptyset7$, E^b , and E^b_- .

AFTER SOLOS, DS - INTERLUDE, V.2, BRIDGE TO FINE