

Euclide

A. Fedrigo

A

Musical notation for section A, measures 1-4. The key signature has one flat (Bb) and the time signature is 4/4. The notes are: 1. Bb2, Gb2, F2; 2. Gb2, F2, Eb2; 3. Eb2, D2, C2; 4. C2, Bb1, Ab1.

Musical notation for section A, measures 5-8. Measure 5: Gb2, F2, Eb2. Measure 6: Eb2, D2, C2. Measure 7: C2, Bb1, Ab1. Measure 8: Ab1, Gb2, F2. First ending: Gb2, F2, Eb2. Second ending: Eb2, D2, C2. The word "Fine" is written below the second ending.

Musical notation for section B, measures 10-13. Measure 10: Gb2, F2, Eb2 (marked 8va--), Gb2, F2, Eb2. Measure 11: Eb2, D2, C2 (marked 15ma), Gb2, F2, Eb2. Measure 12: Gb2, F2, Eb2 (marked 8va--), Gb2, F2, Eb2. Measure 13: Eb2, D2, C2 (marked 8va), Gb2, F2, Eb2.

Musical notation for section B, measures 14-17. Measure 14: Gb2, F2, Eb2 (marked 8va--), Gb2, F2, Eb2. Measure 15: Eb2, D2, C2 (marked 15ma), Gb2, F2, Eb2. Measure 16: Gb2, F2, Eb2 (marked 8va--), Gb2, F2, Eb2. Measure 17: Eb2, D2, C2, Gb2, F2, Eb2.

Musical notation for section C, measures 18-19. Measure 18: Gb2, F2, Eb2, Gb2, F2, Eb2, Gb2, F2, Eb2 (all marked 3). Measure 19: Eb2, D2, C2, Gb2, F2, Eb2, Gb2, F2, Eb2 (all marked 3).

Musical notation for section C, measures 20-21. Measure 20: Gb2, F2, Eb2, Gb2, F2, Eb2, Gb2, F2, Eb2 (all marked 3). Measure 21: Eb2, D2, C2, Gb2, F2, Eb2, Gb2, F2, Eb2 (all marked 3).

Musical notation for section C, measures 22-23. Measure 22: Gb2, F2, Eb2, Gb2, F2, Eb2, Gb2, F2, Eb2 (all marked 3). Measure 23: Eb2, D2, C2, Gb2, F2, Eb2, Gb2, F2, Eb2 (all marked 3).

Musical notation for section C, measures 24-25. Measure 24: Gb2, F2, Eb2, Gb2, F2, Eb2, Gb2, F2, Eb2 (all marked 3). Measure 25: Eb2, D2, C2, Gb2, F2, Eb2, Gb2, F2, Eb2 (all marked 3).

Euclide

2

26

28

30

32

B 34

38

D ♩. = ♩

42 E♭Maj7 A♭m7 DMaj7 CMaj7

46 E♭Maj7 A♭m7 DMaj7 CMaj7

50 FMaj7 A♭Maj7 Bm7

54 F Maj7

A^bMaj7

G^bMaj7

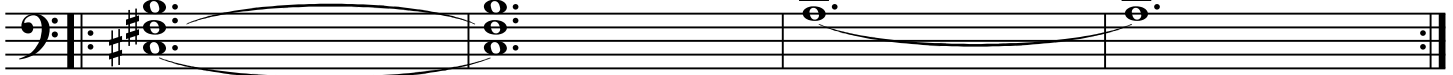


E

GMaj7(#11)

58

15^{ma}



solo sulla quarta corda

dopo il solo suona C B e A