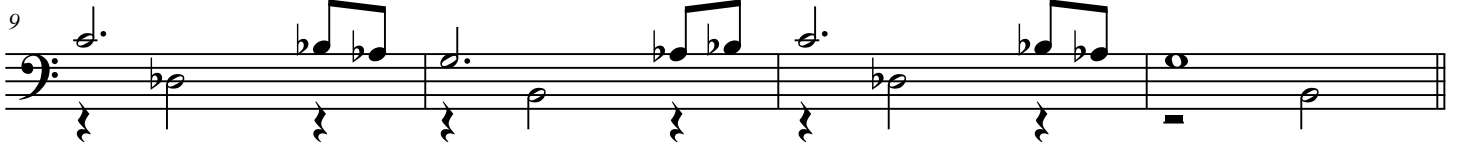


# Novembre

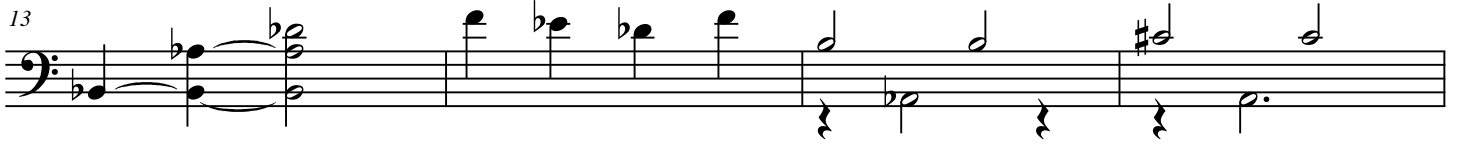
A.Fedrigo



A



B



Fine

Solo

31 E♭Maj7(#11) D♭Maj7(#5) E♭Maj7(#11) D♭Maj7(#5)



A musical staff in bass clef with a repeat sign at the beginning. The staff contains four measures, each filled with diagonal slashes representing a solo line. Above the staff, the chords E♭Maj7(#11), D♭Maj7(#5), E♭Maj7(#11), and D♭Maj7(#5) are written above the first, second, third, and fourth measures respectively.

35 D♭Maj7(#11) BMaj7(#5) D♭Maj7(#11) BMaj7(#5)



A musical staff in bass clef with a repeat sign at the beginning. The staff contains four measures, each filled with diagonal slashes representing a solo line. Above the staff, the chords D♭Maj7(#11), BMaj7(#5), D♭Maj7(#11), and BMaj7(#5) are written above the first, second, third, and fourth measures respectively.

39 B♭m7 A♭m7 AMaj7(#11)



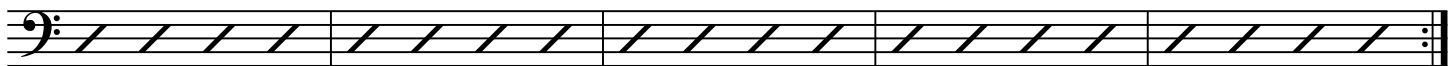
A musical staff in bass clef with a repeat sign at the beginning. The staff contains four measures, each filled with diagonal slashes representing a solo line. Above the staff, the chords B♭m7, A♭m7, and AMaj7(#11) are written above the first, second, and third measures respectively. The fourth measure is empty.

43 B♭m7 EMaj7 A 13 DMaj7 G 13 CMaj7 F 13



A musical staff in bass clef with a repeat sign at the beginning. The staff contains five measures, each filled with diagonal slashes representing a solo line. Above the staff, the chords B♭m7, EMaj7, A 13, DMaj7, G 13, CMaj7, and F 13 are written above the first, second, third, fourth, and fifth measures respectively.

48 B♭9 E♭Maj7 A♭13 D♭Maj7 G♭13 BMaj7 E 13 E7



A musical staff in bass clef with a repeat sign at the beginning and a double bar line with repeat dots at the end. The staff contains five measures, each filled with diagonal slashes representing a solo line. Above the staff, the chords B♭9, E♭Maj7, A♭13, D♭Maj7, G♭13, BMaj7, E 13, and E7 are written above the first, second, third, fourth, and fifth measures respectively.

*D.C. al Fine*